

The Diocese of Sheffield was formed in 1914 and is in the Northern Province of York. It has a population of approximately 1.28 million people, 175 parishes and 221 churches (at the end of 2022). It covers Sheffield, Rotherham and Doncaster and the subsidiary towns and villages of those areas.



The Rt Revd Dr Pete Wilcox, Bishop of Sheffield and The Rt Revd Sophie Jelley, Bishop of Doncaster say about Mothers’ Union...

‘As the Bishops of Sheffield and Doncaster, we are so proud of our Mothers’ Union here in Sheffield Diocese. Across South Yorkshire & East Riding, dedicated groups of faithful disciples of Christ offer their time, talents, and prayer to do such good work in our communities. They also remind us of the worldwide church, as one of the largest global mission movements, expressing the worldwide fellowship of the people of God. There is a long MU history here, taking inspiration from founder Mary Sumner, we trust that God will continue to bless and encourage Mothers’ Union as they shine as Lights for Christ in the world today!

+ Pete & + Sophie

Mothers’UNION
Christian care for families
www.sheffielddmu.co.uk
Reg Charity No 1063619

Diocese of Sheffield

To.....
Branch..... Date.....

Sheffield Mothers’ Union welcomes you as a new member.

We are delighted to welcome you to Mothers’ Union. As the Archbishop of Canterbury said **"Mothers’ Union are the heart and love of the Church"**
We work through prayer and action both here and across the world. We hope you enjoy being part of our amazing world-wide network and participating in our many Diocesan projects, as well as enjoying the fellowship of monthly meetings Your ideas are also most welcome.



VP Doncaster Archdeaconry Canon Liz Paver	President Gill Fellows	VP Sheffield & Rotherham Archdeaconry Jo Anne Van Levesley
--	---	---

About Mothers' Union...

MU is an inclusive membership-based organisation integral to the mission of the Church, with 4 million members world-wide. Our Aims are stopping violence, stopping poverty, stopping injustice. Our projects are helping build a better future.

Membership isn't passive – simply handing over a subscription once a year it is an active involvement in a fellowship that goes right around the world, members can volunteer in local projects run or supported by MU that reach out to support family life in whatever way is needed in the local community.

MU has consultative status with United Nations on the promotion of women's rights and gender equality globally.

Sheffield Diocese has around 700 members, who engage in many local initiatives, whilst also supporting life-giving projects in 84 countries. The Diocese is split into deaneries and branches belong to the deanery in their area. **Sheffield MU** has 6 Deaneries, **Ecclesall & Attercliffe; Ecclesfield; DASH** (made up of Doncaster, Adwick Snaithe & Hatfield); **Rotherham & Laughton; Tankersley and Wath.**

A Cathedral Coffee morning is held on the first Friday of the month starting at 10.15 where you can enjoy fellowship over coffee & homemade scones. There is also a homemade produce stall selling preserves and cakes as well as a stall selling MU cards, diaries etc. **Midday Prayers**, which link members together daily, are led by MU members at around midday too. So do join us.

Our website is worth checking regularly for news about activities and forthcoming events as well as resources for branch meetings. **www.sheffieldmu.co.uk**. We also have a **Facebook** page **Sheffield MU**.

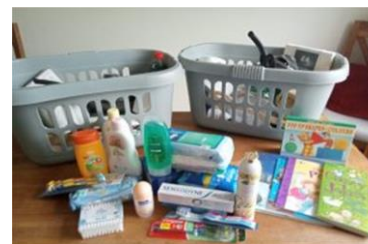
Mothers' UNION
Christian care for families

What We Do ...



We support and run many Toddler groups across the Diocese providing a safe play area for the children and a place where carers can meet and find friendship.

Members raise money for **AFIA (Away From It All)** which provides a much-needed break for families who need to get away but don't have the means to do so. Sheffield MU uses caravans on the east coast for holidays as well as funding day trips.



We support 5 **Refuges** across the Diocese by providing toiletries, moving on baskets, food hampers and gifts at Easter and Christmas.

We also work with the **Clewer Initiative to end Modern Slavery** working with SY Police to provide clothing & toiletries for victims of slavery.

We support **MU Worldwide** by fundraising for the Summer of Hope Appeal, Make a Mothers' Day, and the Christmas Appeal. All of these helps fund our **Literacy and Financial Support programmes**. More information can be found on our national website **www.mothersunion.org**.

